

19.2 Project Coordination

Coordination of ongoing and planned initiatives is critical to successful implementation. The Symons Campus lands overlap and are adjacent to numerous jurisdictional authorities and landowners such as the City of Peterborough, the County of Peterborough and the Townships of Selwyn and Douro-Dummer, the Ministry of Transportation, Hydro One, and Parks Canada. The implementation of the TLNAP and any new project will include coordination with adjacent property owners, adjacent townships, and consultation between various key players and institutional partners, as needed.

The City of Peterborough is the authority that reviews and approves required development applications, such as amendments to the official plan and zoning, plans of subdivision or condominium, site planning applications (including review of technical studies against Provincial regulations), building permits, and more.

The County of Peterborough and Surrounding Townships, specifically the Townships of Douro-Dummer and Selwyn, which share the University's northern and eastern boundaries, should be engaged through the University's land planning exercises. The County and adjacent townships are commenting agencies on development applications located on lands abutting their municipal boundaries. Effective engagement will require collaboration and coordination of the delivery and management of infrastructure and conservation of natural heritage features that cross jurisdictional boundaries.



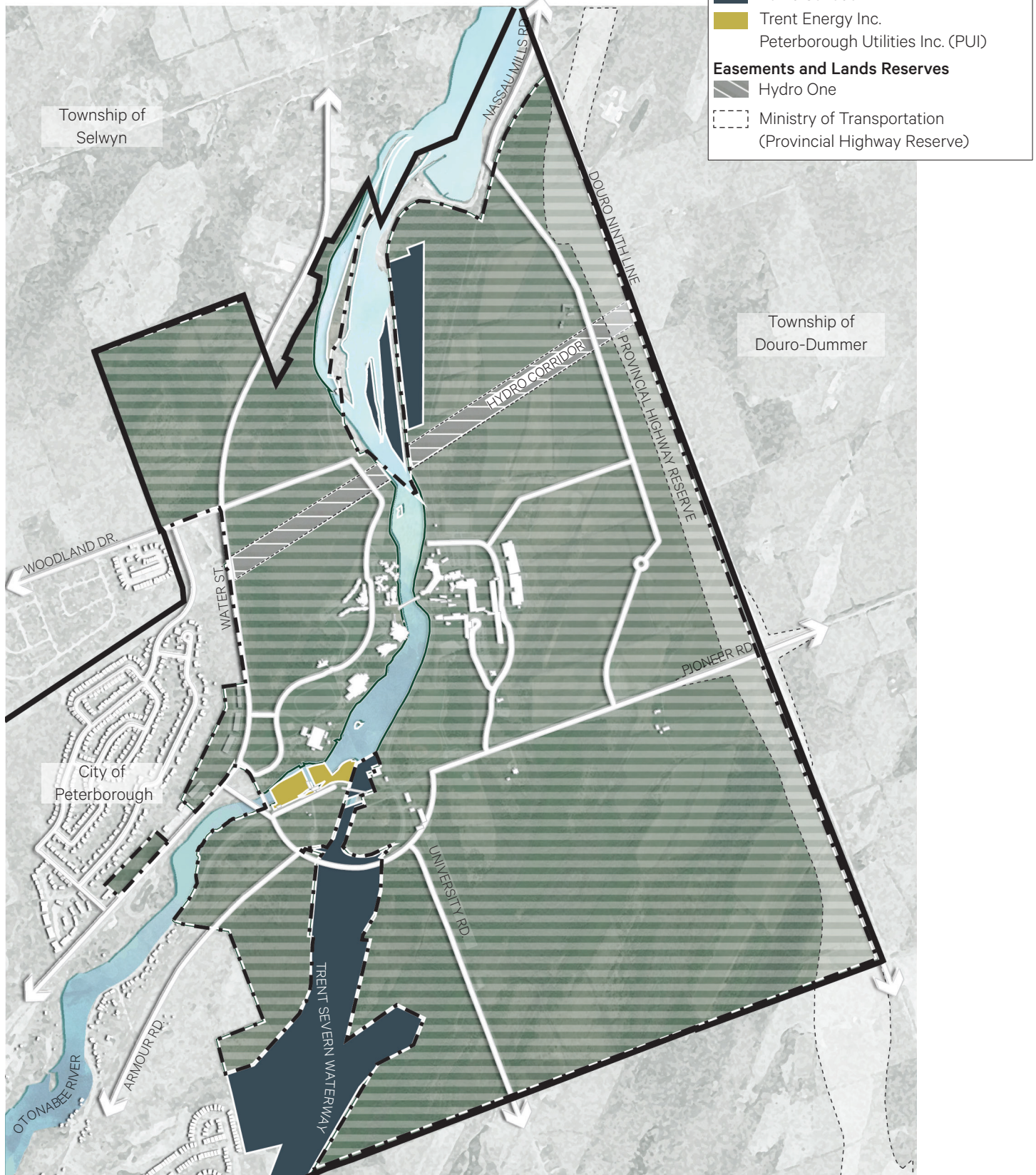
Parks Canada is a federal agency that seeks to protect and promote national parks and cultural heritage and manages the Trent-Severn Waterway, a National History Site. Parks Canada owns land adjacent to the Otonabee River and Trent Severn Waterway, including the lockstations and associated adjacent lands. Coordination with Parks Canada will be required to ensure continued access to locks for maintenance, and to establish a connected regional trail system that integrates the Symons Campus.

Hydro One has control rights over the lands within the transmission corridor on the Symons Campus. This corridor contributes to Hydro One's ability to deliver safe, reliable, and affordable electricity throughout the Province. Hydro One has the primary right to use the corridor lands for transmission and distribution purposes and hold a statutory easement under the Reliable Energy Consumer Protection Act. Hydro One offers a Provincial Secondary Land Use Program, which permits public use of the corridor in a manner that does not restrict the continued operation and maintenance of the Hydro Corridor. The proposed meadow-way in the TLNAP is a compatible use, identified in Hydro One's Provincial Secondary Land Use Program, and will require consultation with and approval from Hydro One.

Ministry of Transportation Ontario (MTO) is a Provincial ministry responsible for moving people and goods safely, efficiently, and sustainably. The Ministry of Transportation has placed a reserve on the Symons Campus lands, along 9th Line, for the future expansion of Hwy 115 along the 9th Line. Unless the reserve is removed by the Ministry, Trent University is limited in the use of these corridor lands. Proposals or construction on or near a provincial highway or reserve are reviewed by the Ministry may need a permit to ensure they follow the policy rules and guidelines of the Public Transportation and Highway Improvement Act. The removal or realignment of the highway reserve would trigger an update to the TLNAP.

Trent Energy Inc. (under the Peterborough Utilities Inc. umbrella) worked together with Trent University in 2012 to redevelop the Stanley Adamson Powerhouse. This partnership has secured a renewable source of electricity for the University, as well as a long-term revenue stream. Trent Energy Inc. assumes day-to-day management of the historic powerhouse.

Figure 36: Property Ownership and Easements



LEGEND:

- Municipal Boundary
- Property Ownership**
 - Trent University (Symons Campus)
 - Parks Canada
 - Trent Energy Inc. / Peterborough Utilities Inc. (PUI)
- Easements and Lands Reserves**
 - Hydro One
 - Ministry of Transportation (Provincial Highway Reserve)

