

# 6.0

## University Green Network

The University Green Network (UGN) introduces a robust and connected network of rich and biodiverse natural features that provide significant ecological function and invaluable land-based opportunities for teaching and discovery. The UGN recognizes the interdependencies between ecology, hydrology, and a legacy of human use (e.g. Indigenous traditional uses, agriculture) and seeks to steward these areas within the Nature Areas and across the Symons Campus.

### The University Green Network:

- Meets Trent’s commitment to 60 per cent of the Symons Campus as Nature Areas and green spaces and provides opportunities to exceed this value through stewardship;
- Fosters and supports environmental stewardship across the Symons Campus to support biodiversity;
- Integrates wildlife connections across the campus and within the local and regional landscapes;
- Recognizes and supports the hydrologic system;
- Maintains and/or enhances natural areas and supports efforts to achieve net benefit; and
- Infuses naturalized spaces in the built environment to cultivate opportunities for positive interaction with our environment.

### Policy +

Some components of the UGN will be defined by policy or legislation (e.g., the City’s Natural Heritage System, Species at Risk habitat); policy-based protections are recognized and will be protected for. The UGN extends beyond policy by integrating a holistic approach that recognizes interactions between natural and hydrologic systems, integrates other

green spaces that are not captured by policy (e.g., pollinator gardens, pocket forests, etc.), and provides opportunities for environmental teaching and innovation that augment Trent’s experiential learning offerings and contribute to environmental discourse and research.

### A Living System

The UGN will evolve over time to ensure new elements and details can be integrated. This includes integrating the City’s Natural Heritage System (once in force and effect), updated feature mapping (e.g., as delineated through site-specific studies), stewardship actions, and other initiatives that align with the UGN.

### Process

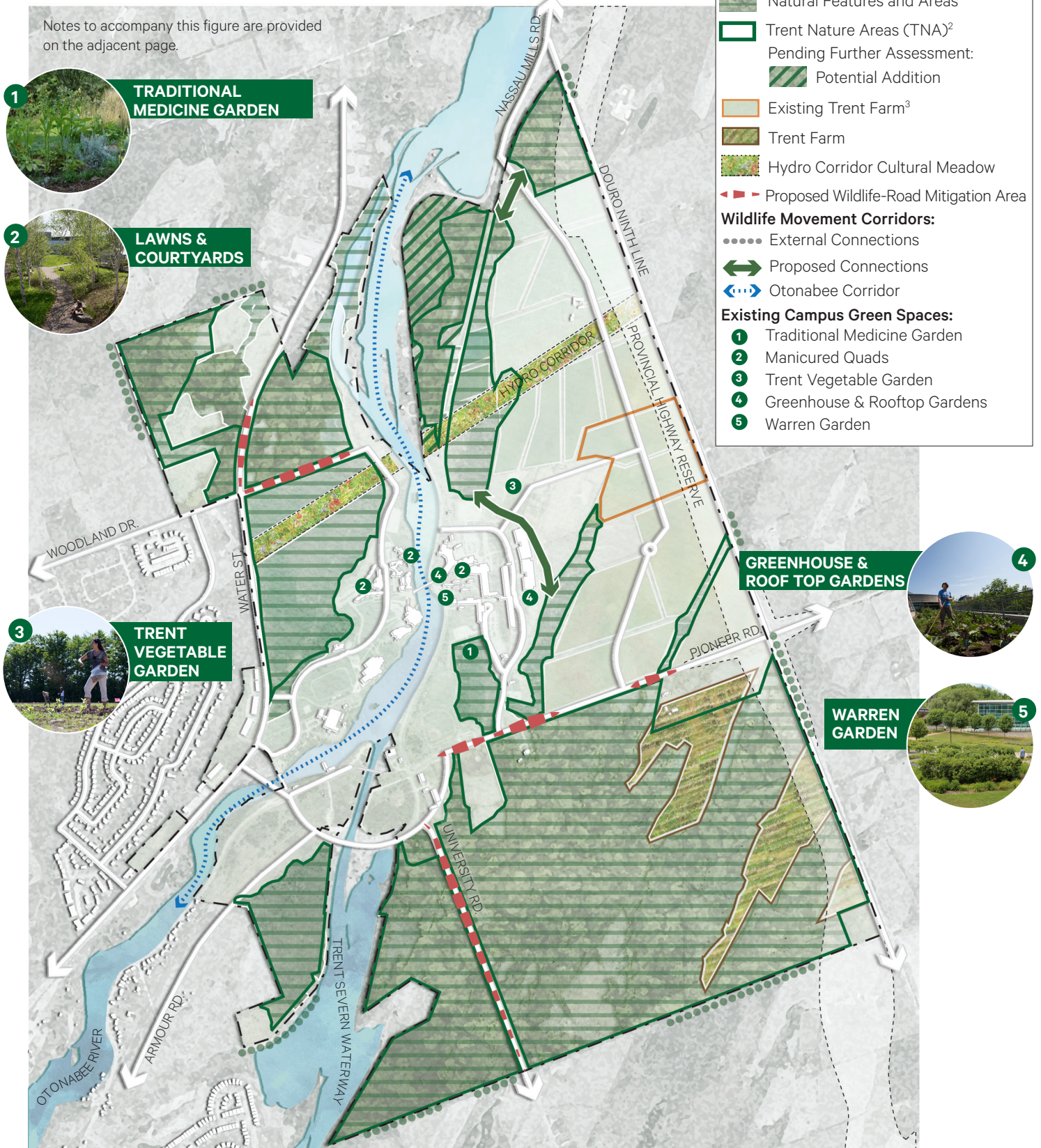
Part IV of the TLNAP, Towards Implementation, provides targeted guidance to assist in the transition from vision to action and in setting standards for studies and land use planning initiatives. The first step for implementing the UGN and active stewardship for the Nature Areas, is through the Systems-Level Plan (Section 14.1).

#### Notes to accompany Figure 13:

1. The UGN comprises a diverse system of spaces and includes lands protected by the Provincial Policy Statement and City of Peterborough Official Plan, the Trent Nature Areas, and areas and features that are integrated into built areas in support of the ecological and hydrological function of the larger system.
2. Management approaches for the stewardship of the Trent Nature Areas are outlined in Part III of this Plan.
3. The current Trent Farm will remain in operation in situ until the new location south of Pioneer Road is prepared and made suitable for the relocation. The transition and relocation process will be coordinated in consultation with the Trent School of the Environment
4. New roads and circulation routes are conceptual and require further detailed study. Future design related to public streets and infrastructure will be subject to approval by the City, and Site Plan Approval will be required for future private infrastructure, as applicable.

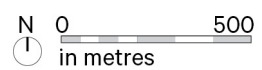
**Figure 13: A Robust University Green Network**

Notes to accompany this figure are provided on the adjacent page.



**LEGEND:**

- Trent University Boundary
- Natural Features and Areas
- Trent Nature Areas (TNA)<sup>2</sup>
- Pending Further Assessment:
  - Potential Addition
- Existing Trent Farm<sup>3</sup>
- Trent Farm
- Hydro Corridor Cultural Meadow
- Proposed Wildlife-Road Mitigation Area
- Wildlife Movement Corridors:**
  - External Connections
  - Proposed Connections
  - Otonabee Corridor
- Existing Campus Green Spaces:**
  - 1 Traditional Medicine Garden
  - 2 Manicured Quads
  - 3 Trent Vegetable Garden
  - 4 Greenhouse & Rooftop Gardens
  - 5 Warren Garden



## GOALS FOR THE UNIVERSITY GREEN NETWORK



## LEARNING AND DISCOVERY

- Provide opportunities for outdoor, hands-on learning and encourage a dynamic interplay of research and teaching in outdoor settings.
- ⊗ Integrate Indigenous Traditional Knowledge as a means by which to understand the world and learn from the land.



## ENVIRONMENTAL RESILIENCE AND INTEGRITY

- Maintain, restore, and enhance the University's natural landscape as an ecologically resilient and connected system with a rich biodiversity of plant and animal life to sustain current and future generations.
- Strive for a net benefit to the University's natural areas and systems on the Symons Campus, e.g., by directing recreational uses to less sensitive areas and integrating environmental features into the built environment, and/or through restoration or enhancement activities.
- Apply principles of environmental stewardship and biodiversity supportive actions across all spaces on campus, and acknowledge the need for decision makers, organizations, community groups, volunteers, and students to be caretakers of the land.
- Combat climate change in ways that ensure clean air, clean water, and a resilient ecosystem, such as by providing more permeable land cover, minimizing erosion and the effects of flooding, and contributing to the urban forest canopy.
- ⊗ Integrate and apply Indigenous Traditional Knowledge values into practice to inform land use decision making and enhance understanding of the Indigenous environmental worldview.



## ECONOMIC RESILIENCE, LEADERSHIP, AND INNOVATION

- Integrate inviting spaces for the community to interact with nature and with the University campus.
- ⊗ Bolster Trent University leadership and expertise in environmental and Indigenous studies with the University's stewardship practices.
- Invite tourism (including responsible eco- and agri-tourism opportunities through attractive recreational and educational offerings).



## SOCIAL RESILIENCE, COMMUNITY, AND INCLUSIVITY

- Understand and promote the physical and psychological benefits and opportunities presented by green spaces.
- Provide a wide variety of programmatic opportunities throughout the campus that address different student and community needs, and ensure equitable access to these spaces. Programs may include teaching, research, and experiential learning; spaces open for celebration and congregation; quiet spaces of respite and outdoor study; and outdoor athletics, recreation, and wellness.
- ⊗ Integrate Indigenous spaces and placemaking elements, such as traditional medicine gardens, permanent or temporary public art, and interpretive and educational signage, to ensure the Symons Campus is inviting to the Michi Saagiig and Indigenous students, faculty, and visitors.